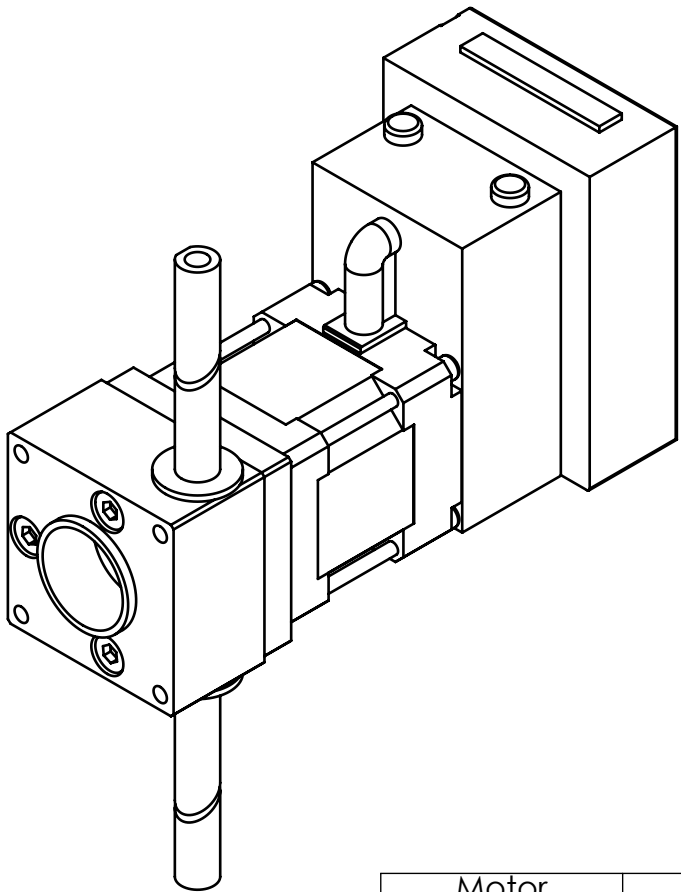
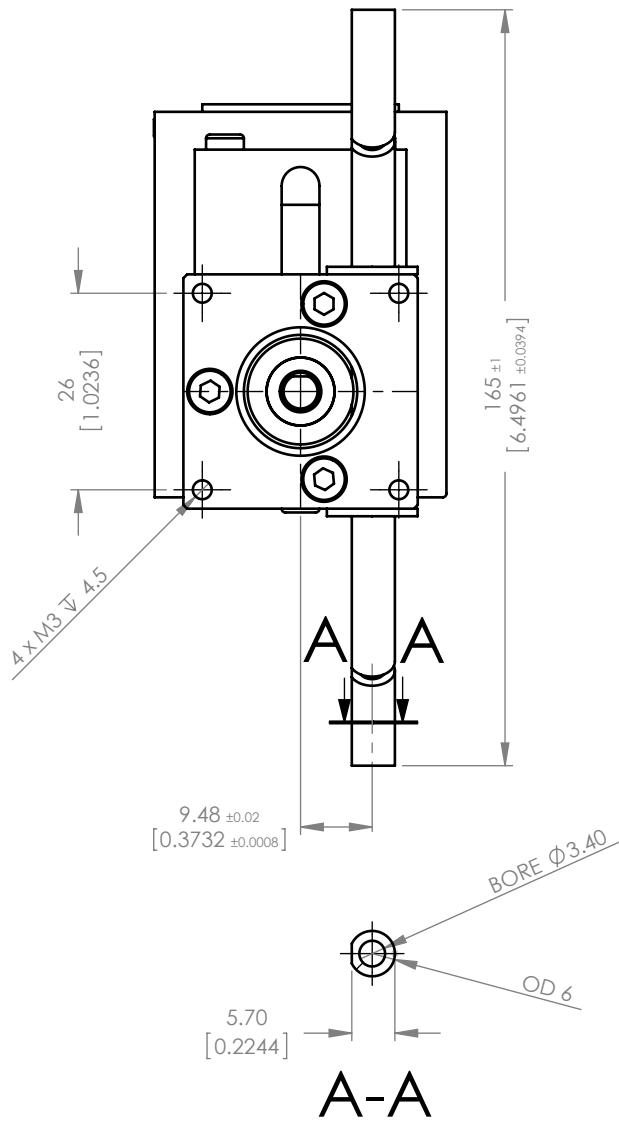
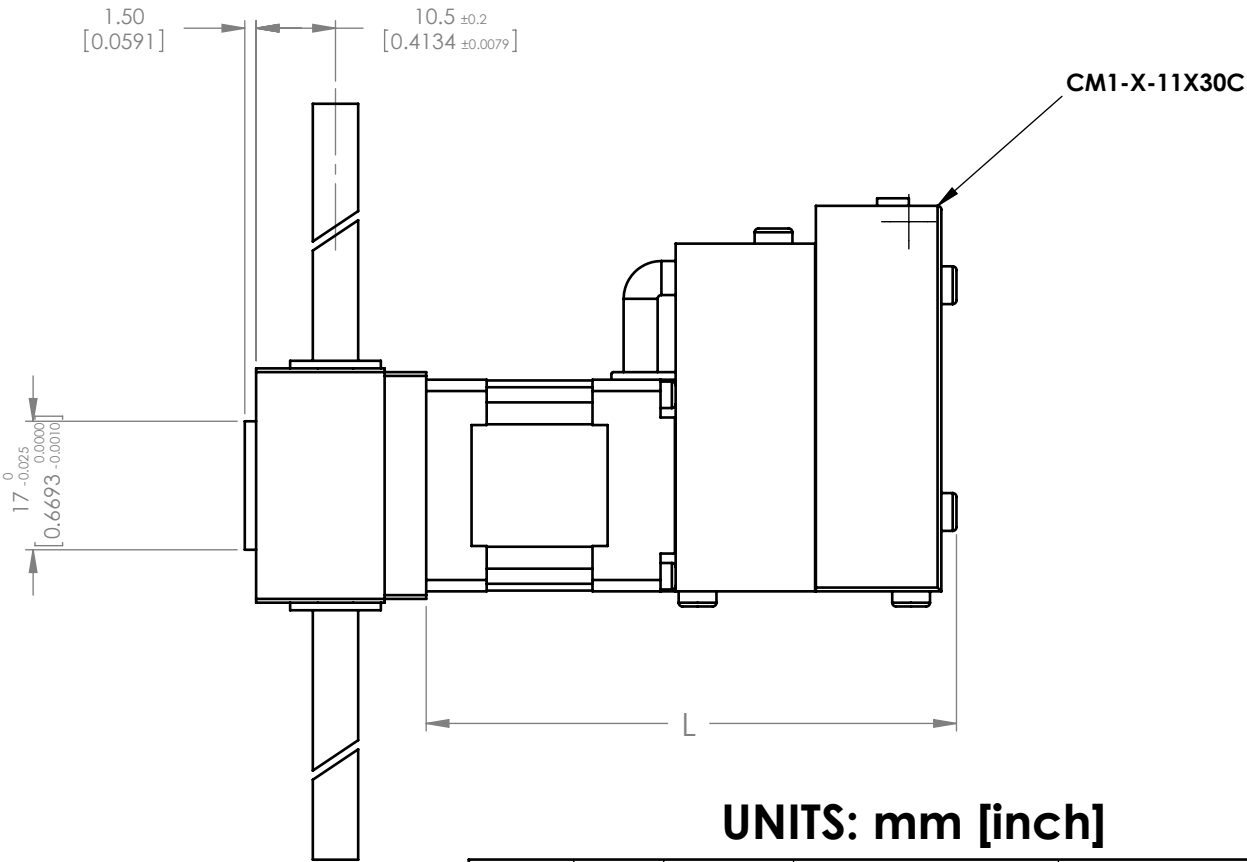
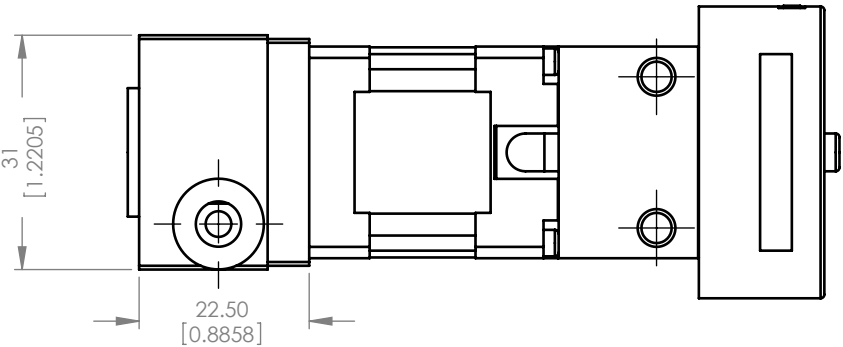


TECHNICAL INFORMATION

Part Number	RRA11-06-250-11S30C	RRA11-06-250-11L30C
Continuous Axial Force (N)	3	8
Momentary load (N)	6	12
Travel Range (mm)	150-500mm (50mm increments)	
Resolution	0.00085mm @ 50,000 steps/rev	
Max Speed	300mm/sec	
Tempurature Range	Between 0°C and 40°C	
Repeatability	0.025mm	
Side Wobble (fully extended)	±0.2mm	
Life time	5 million cycles	
Backlash	0.08mm linear movement	
Rack material	316 grade stainless steel	
Pinion Material	PEEK or Stainless Steel	
Lubrication	None for PEEK, PTFE based grease for SS	



Motor	L
CM1-X-11S30C	71mm
CM1-X-11L30C	85mm

UNITS: mm [inch]

	NAME	DATE	DO NOT SCALE DRAWING	DIMENSIONS ARE METRIC
DRAWN	M. Dank	20-Feb-2012	TITLE: RRA-11 Racktuator	
CHECKED				
ENG APPR.				
SIZE B			PRT. NO. RRA-11-06-250-11X30C	REV 1.2
SCALE: 1:1		WEIGHT: -		SHEET 1 OF 1

Unless otherwise specified,
general tolerances are ±0.13mm

PROPRIETARY AND CONFIDENTIAL
THE INFORMATION CONTAINED IN THIS
DRAWING IS THE SOLE PROPERTY OF
MYOSTAT MOTION CONTROL INC.
ANY REPRODUCTION IN PART OR AS A
WHOLE WITHOUT THE WRITTEN PERMISSION
OF COOLMUSCLE INC. IS PROHIBITED.

**COOL MUSCLE**

Myostat Motion Control Inc.
17817 Leslie St, Unit 43
Newmarket , ON - L3Y 8C6 Canada
www.myostatmotioncontrol.com